

APP CRS <b>164°</b>	Rwy Idg TDZE Apt Elev	<b>N/A</b> <b>N/A</b> <b>1379</b>
------------------------	-----------------------------	---

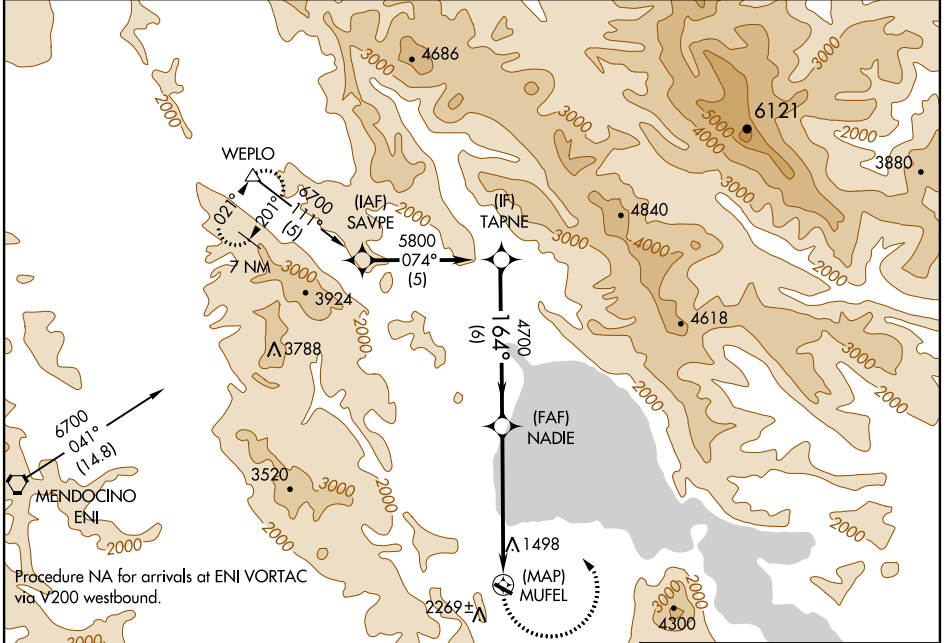
# RNAV (GPS)-A

LAKEPORT/LAMPSON FIELD (102)

**▽** Circling NA south of Rwy 10 and 28. DME/DME RNP-0.3 NA.  
**▲ NA** When local altimeter setting not received, use Ukiah altimeter setting and increase all MDA 560 feet.

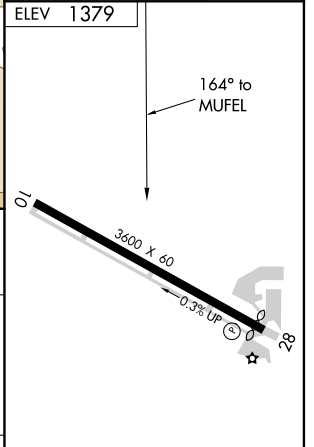
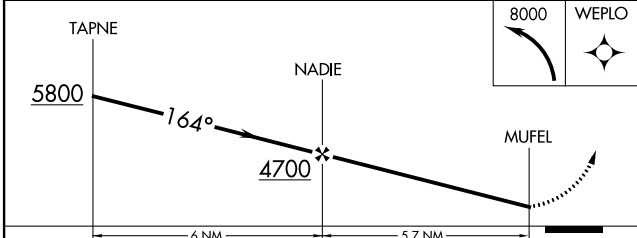
**MISSED APPROACH:** Climbing left turn to 8000 direct WEPLO and hold, continue climb-in-hold to 8000.

<b>AWOS-2</b> <b>118.35</b>	<b>OAKLAND CENTER</b> <b>127.8 353.5</b>	<b>UNICOM</b> <b>122.8 (CTAF) ①</b>
--------------------------------	---	--



SW-2, 13 DEC 2012 to 10 JAN 2013

SW-2, 13 DEC 2012 to 10 JAN 2013



CATEGORY	A	B	C	D
CIRCLING	2580-1¼ 1201 (1300-1¼)	2580-1½ 1201 (1300-1½)		NA

MIRL Rwy 10-28 ①